

A background image showing a person's hands typing on a laptop keyboard. The image is partially obscured by a large red rounded rectangle containing the main title.

FAQ on Excel templates in TaxWare

Tips and tricks around TaxAnalyzer Excel Add-In

Valid from release date 2.42, April 2024

Table of contents

- 1 Re-insert missing add-in in Excel 3
- 2 TaxWare Excel- templates do not work correctly 5
 - 2.1 Problems with archive software, MS OneDrive or with storage locations other than C:/ 5
 - 2.2 General Excel security settings for TaxAnalyzer add-ins 7
 - 2.3 Add-in storage location 8
- 3 This template ist not licensed 9
- 4 TaxAnalyzer works and yet no calculation takes place in the templates 10
 - 4.1 Region settings 10
 - 4.2 Calculation option 11
- 5 You have integrated your own Excel templates into TaxWare 11

1 Re-insert missing add-in in Excel

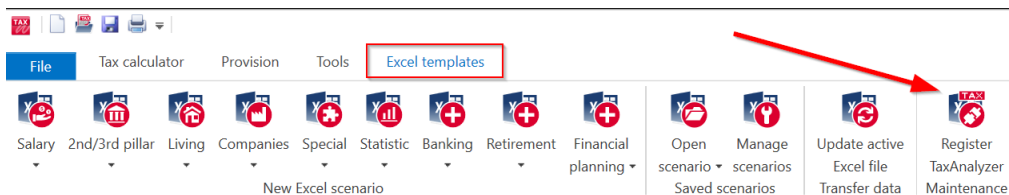
For symptoms like

- TaxWare crashes when opening one of our templates from TaxWare,
- Missing display of the TaxAnalyzer menu in Excel,
- Empty TaxAnalyzer drop-down list, e.g. when selecting a canton,
- No or incorrect calculations in Excel (-999'999, #NAME, #N/A)

the TaxAnalyzer add-in is most likely no longer active.

Solution:

1. Make sure that your antivirus programme does not block the add-in (if necessary, classify it as trustworthy)
2. Make sure that all patches for Excel are up-to-date
3. Close all Excel files and click on Register TaxAnalyzer under Excel Templates in TaxWare



4. Select 'Add-Ins' under the Excel options. If a TaxAnalyzer Excel add-in and COM add-in do not appear under the active application add-ins, continue with the following steps (this applies to every user if the user profiles do not automatically adopt the admin data of the terminal server):

General

Formulas

Data

Proofing

Save

Language


Accessibility

Advanced

Customise Ribbon

Quick Access Toolbar

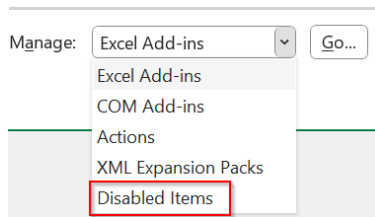
Add-ins

 View and manage Microsoft Office Add-ins.

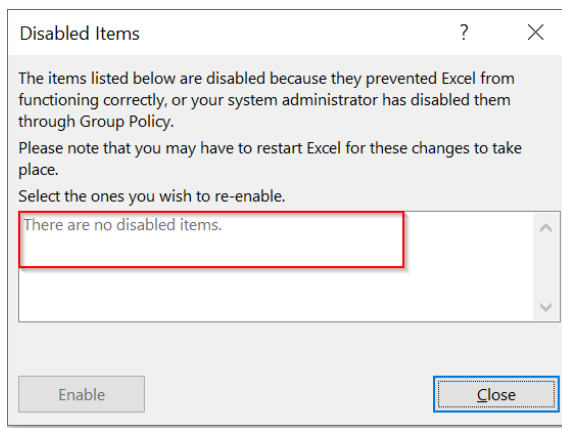
Add-ins

Name ^	Location	Type
Active Application Add-ins		
Microsoft Power Pivot for Excel	C:\Program Files\Microsoft Office\root\Office16\ADDINS	COM Add-in
TaxAnalyzerAddIn	C:\Taxware ZIP\Build 2.42.17\Build\BinaryFolderForShareI	COM Add-in
TaxAnalyzerXLLAddIn	C:\Taxware ZIP\Build 2.42.17\Build\BinaryFolderForShareI	Excel Add-in
Inactive Application Add-ins		
Analysis ToolPak	C:\Program Files\Microsoft Office\root\Office16\Library\	Excel Add-in
Analysis ToolPak - VBA	C:\Program Files\Microsoft Office\root\Office16\Library\	Excel Add-in
Euro Currency Tools	C:\Program Files\Microsoft Office\root\Office16\Library\	Excel Add-in

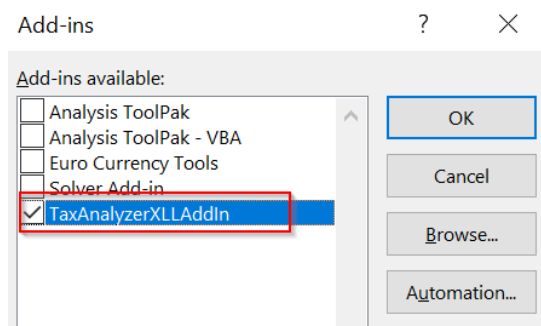
5. Select «Deactivated elements» from the dropdown at the bottom under Manage and click on «Go».



6. Activate any deactivated TaxAnalyzer elements by selecting them individually and clicking on «activate».



7. Elect the type of missing add-in according to point 4 (Excel or COM) in the dropdown from point 5 and tick the box to activate it.



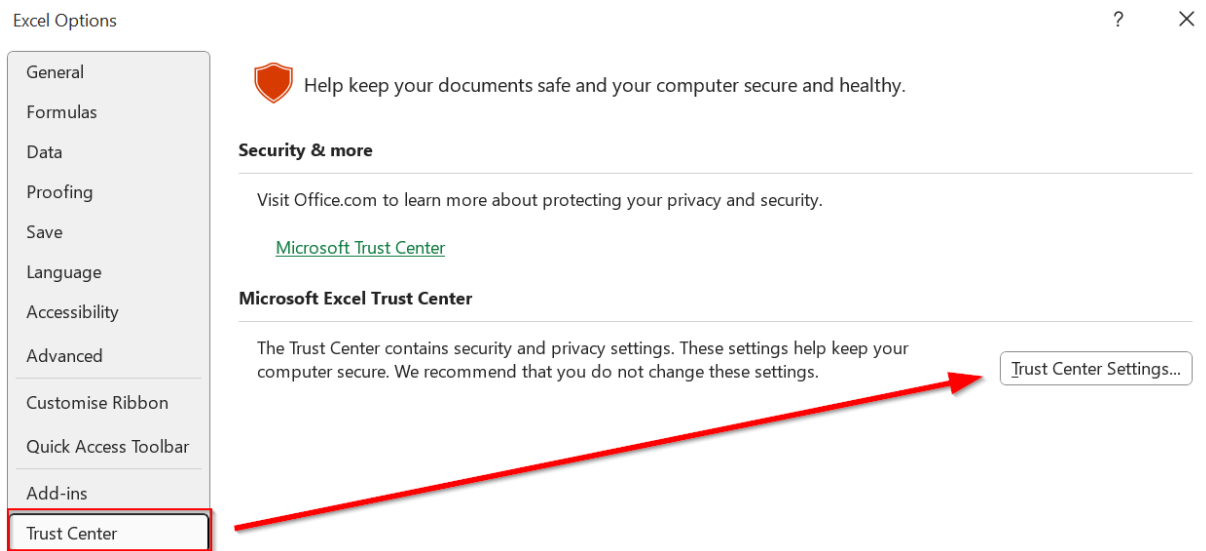
8. if the COM add-in cannot be activated, it may be interfering with existing COM add-ins (e.g. printer, PDF or archive add-ins). Deactivate these and try again. If TaxAnalyzer works (check with template from TaxWare), the interfering add-in must remain deactivated.

2 TaxWare Excel- templates do not work correctly

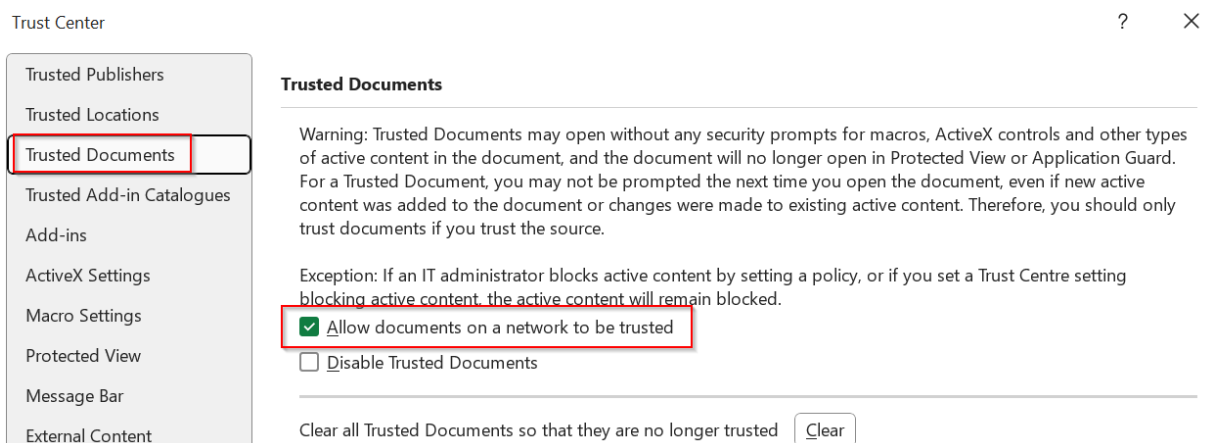
2.1 Problems with archive software, MS OneDrive or with storage locations other than C:/

Please note that the TaxAnalyzer add-in may not load if you open an Excel file directly from archive software (Kendox, m-files, etc.). Windows can also classify a customer file as potentially dangerous and block add-ins if you save the customer file on an external hard drive or a path synchronised with OneDrive. It can help here if you allow the trustworthiness of network drives in the Excel options/Trust Centre and add your company's own server including subfolders as a secure location (see image). As a last resort, it helps to first copy the customer file to the desktop (if this is not also linked to OneDrive) and then open it from there:

- Select in Excel «File» - «Options»
Then Select «Trust Center» - «Settings for the Trust Center...»



- Go to «Trusted documents» and activate «Allow trustworthiness of documents in a network»



- Go to «Protected view» and deactivate «Activate protected view for files from the Internet»

Trust Center

Protected View

Protected View opens potentially dangerous files, without any security prompts, in a restricted mode to help minimise harm to your computer. By disabling Protected View, you could be exposing your computer to possible security threats.

Enable Protected View for files originating from the Internet

Enable Protected View for files located in potentially unsafe locations ⓘ

Enable Protected View for Outlook attachments ⓘ

Security settings for opening Text-Based files (.csv, .dif and .silk) from an untrusted source

Always open untrusted Text-Based files (.csv, .dif and .silk) in protected view

Security settings for opening Database files (.dbf) from an untrusted source

Always open untrusted Database files (.dbf) in protected view

- Go to «Trusted locations» and «activate Trusted storage locations....»
- You can also add new trusted locations here (do not forget subfolders!)

Trust Center

Trusted Locations

Warning: All of these locations are treated as trusted sources for opening files. If you change or add a location, make sure that the new location is secure.

Path	Description	Date Modified
User Locations		
C:\Users\sutd\Desktop\Vertrauenswürdig\		23.07.2024 14:18
C:\Users\sutd\Desktop\Neuer Ordner\		02.05.2023 08:40
C:\Program Files\Microsoft Office\root\Templ	Excel default location: Application Templates	
C:\Program Files\Microsoft Office\root\Office	Excel default location: Add-ins	
C:\Program Files\Microsoft Office\root\Office	Excel default location: Office StartUp	
C:\Program Files\Microsoft Office\root\Office	Excel default location: Excel StartUp	
C:\Users\sutd\AppData\Roaming\Microsoft\T	Excel default location: User Templates	
C:\Users\sutd\AppData\Roaming\Microsoft\	Excel default location: User StartUp	
Policy Locations		

Path: C:\Users\sutd\Desktop\Vertrauenswürdig\
Description:
Date Modified: 23.07.2024 14:18
Sub-Folders: Allowed

Allow Trusted Locations on my network (not recommended)

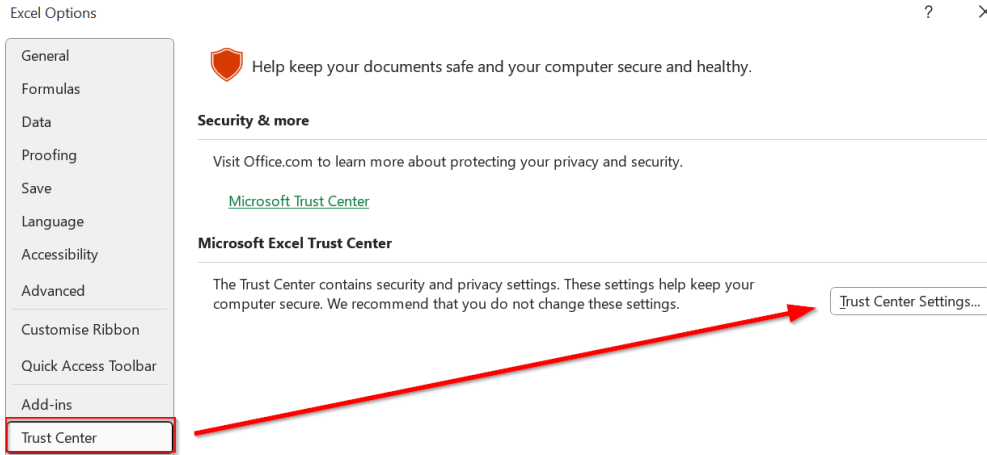
Disable all Trusted Locations

Add new location... Remove Modify...

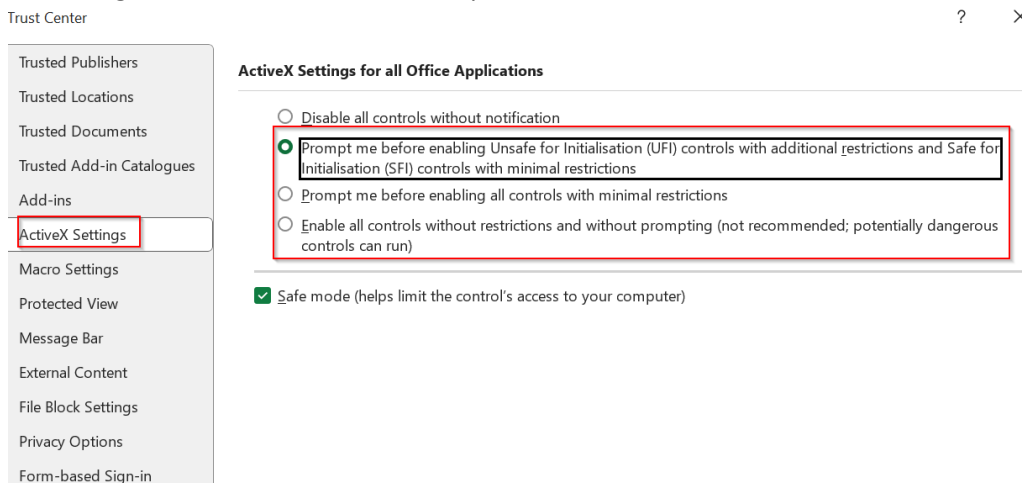
OK Cancel

2.2 General Excel security settings for TaxAnalyzer add-ins

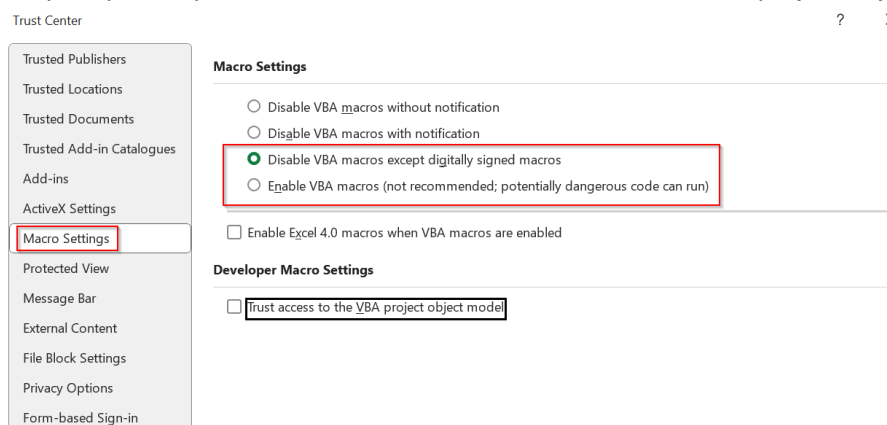
Make sure that the following options are activated in the Trust Centre in the «Trust Centre settings»:



ActiveX settings: Select one of the framed options:

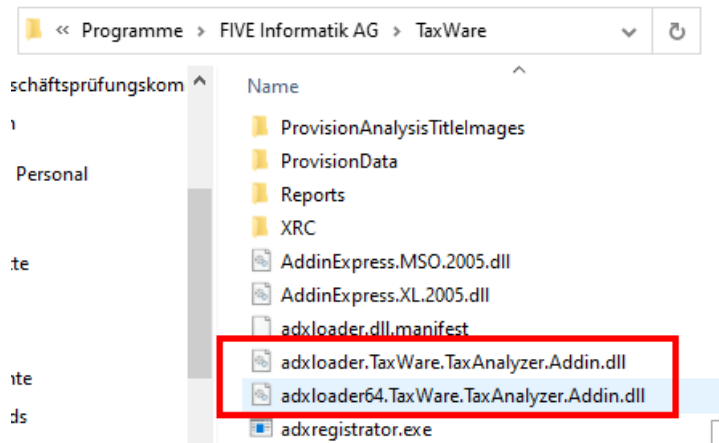


Macro settings: Select one of the options framed in red. If you develop your own templates with TaxAnalyzer, you may also need to tick the «Trust access to the VBA project object model» checkbox:

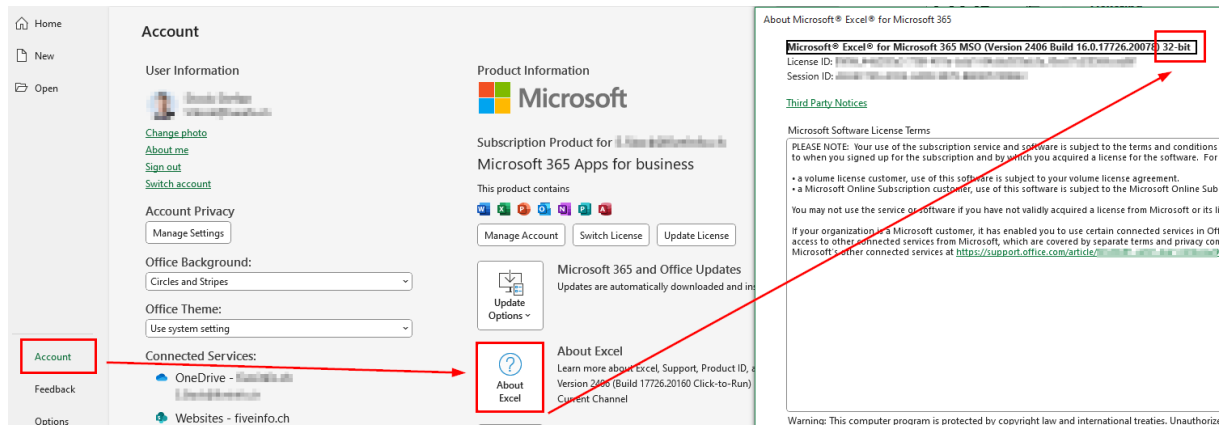


2.3 Add-in storage location

Both the Excel and the COM add-in are available in the same file. You can find them under the TaxWare programme folder (click on the TaxWare icon and click on «Open file location», possibly twice). For Excel 64bit version use the «...64...dll» file.

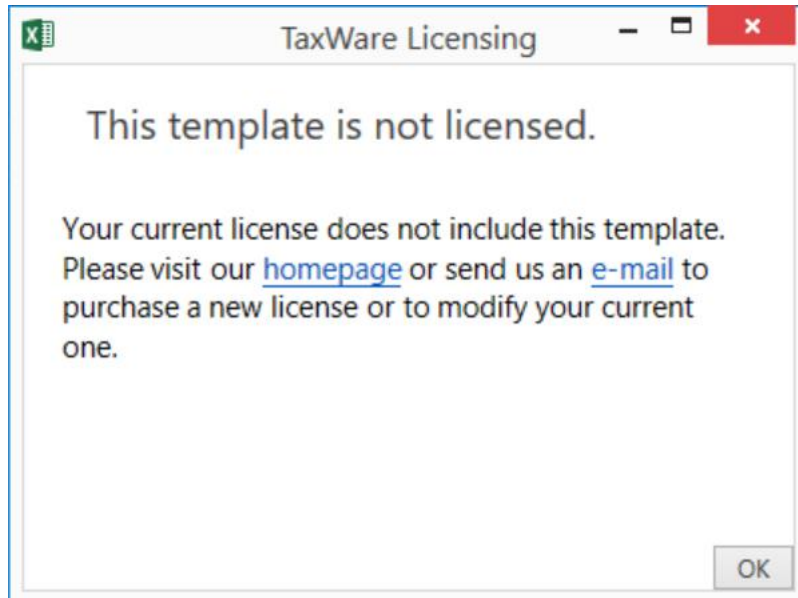


You can find your Office version under File/Account/About Excel:



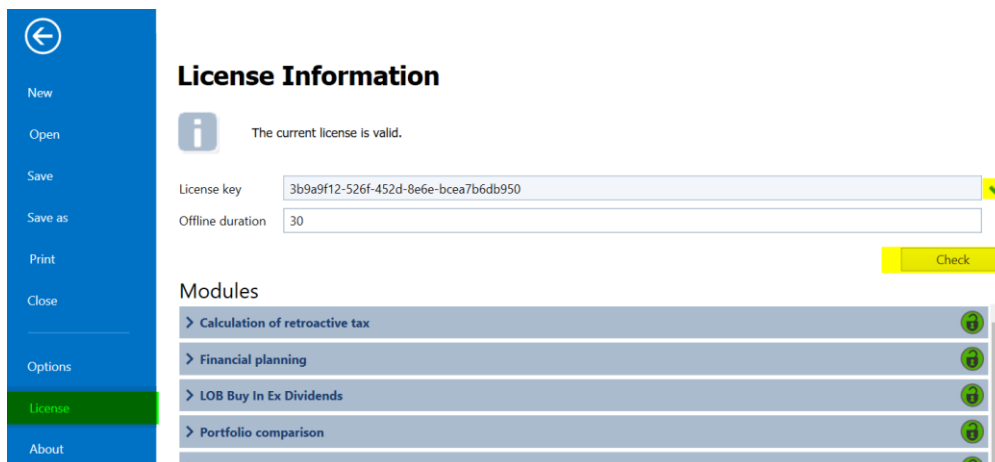
3 This template ist not licensed

When opening a saved TaxWare Excel template, the following message appears:
«This template ist not licensed»:



Solution:

1. Please close Excel (check with Task Manager whether a «hidden» instance is still running)
2. Open TaxWare and check whether the licence key is valid via File / Licence



3. Then open the desired Excel template again from TaxWare
4. Then open the saved template again, access should now work

4 TaxAnalyzer works and yet no calculation takes place in the templates

In addition to a faulty function argument (select dropdowns with the mouse, not via letter selection), the Windows region settings or the Excel calculation option 'manual' could be to blame here.

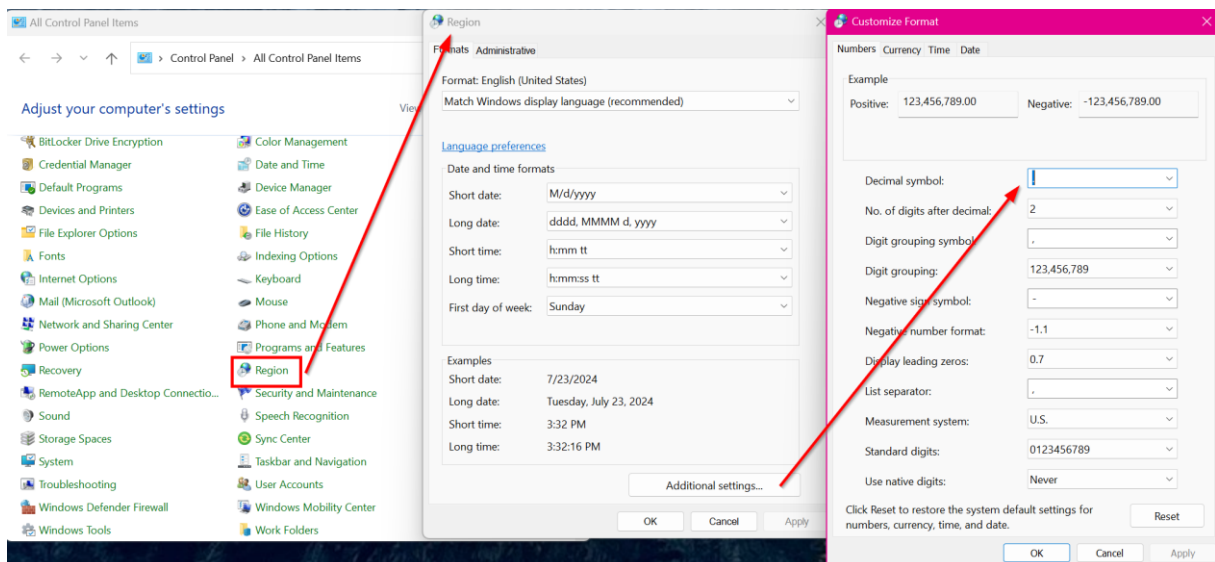
This can affect both the display of the numbers and the date.

Numbers, e.g. German system 1,234.56 (thousands point and decimal point).

Date, e.g. US system 24/5/2024 with slash for 24 May 2024.

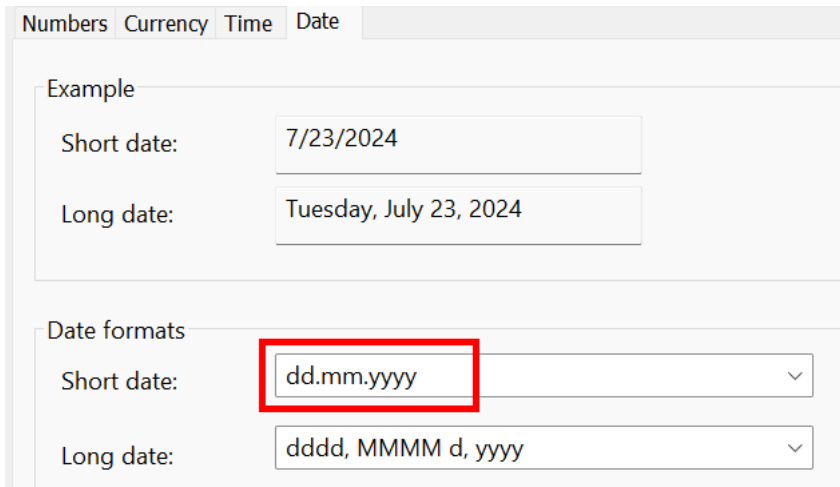
4.1 Region settings

1. Open Control Panel → Region → Other settings



2. Customisation in the «Numbers» tab. It is important to set a point for the decimal separator. The number grouping is a user setting that can be set at will without influencing the calculations (apostrophe or space).

- The date must always be separated by dots.



Numbers Currency Time Date

Example

Short date: 7/23/2024

Long date: Tuesday, July 23, 2024

Date formats

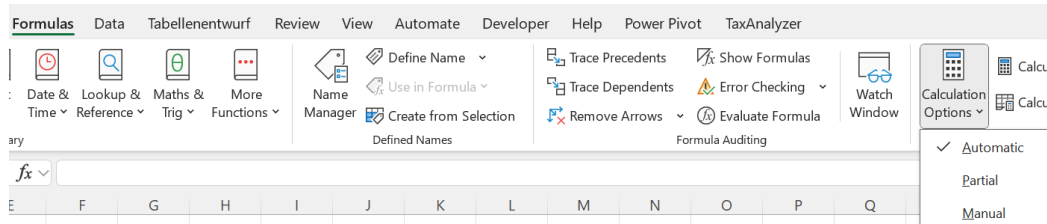
Short date: **dd.mm.yyyy**

Long date: dddd, MMMM d, yyyy

4.2 Calculation option

If the problem has not yet been resolved, the calculation option could also be set to «Manual». However, this should be set to «Automatic».

- Switch to the «Formulas» tab in Excel
- Select «Automatic» for the calculation options



5 You have integrated your own Excel templates into TaxWare

If you have just carried out a TaxWare update and it no longer starts, it could be because the ID of an Excel template exists twice. This can happen if you have customised one of our licensed templates for your needs and then integrated it into TaxWare as your own template.

Solution:

After each TaxWare update, you must delete our original of your customised Excel template in the TaxWare program directory so that the licence ID of this template is not duplicated.

Your support contact

+41 31 858 23 20

support@taxware.ch

www.taxware.ch

for taxes, pensions & finances



Stefan Stock



Dylan Sutter



Shathanan Amirthalingam



Sonja Knutti

Support times: Monday – Friday, 08.00 h – 12.00 h and 13.30 h – 17.00 h